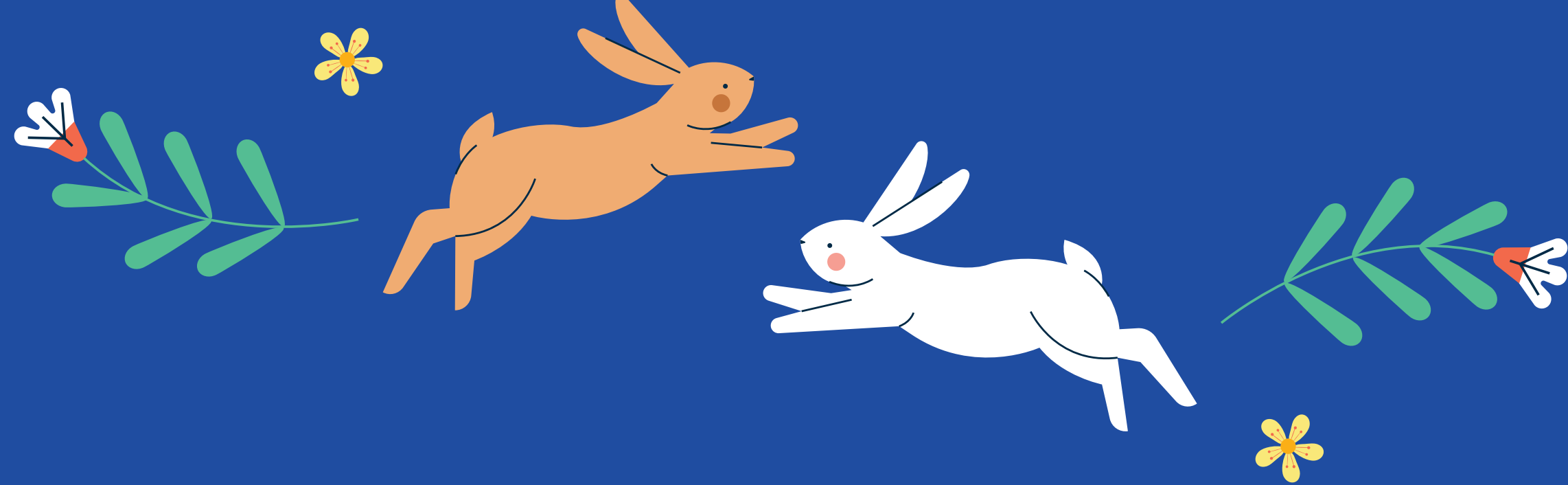


Variation in purchases and withdrawals in Portugal  
in the period of Easter 2025 x Easter 2024



Variation in purchases  
in the period of Easter 2025 vs Easter 2024



## EASTER PREPARATIONS

Variation in value of physical purchases made by Portuguese people during the Easter period 2025 vs. daily average from the previous weekend until Ash Wednesday (12 - 16/April/2025)



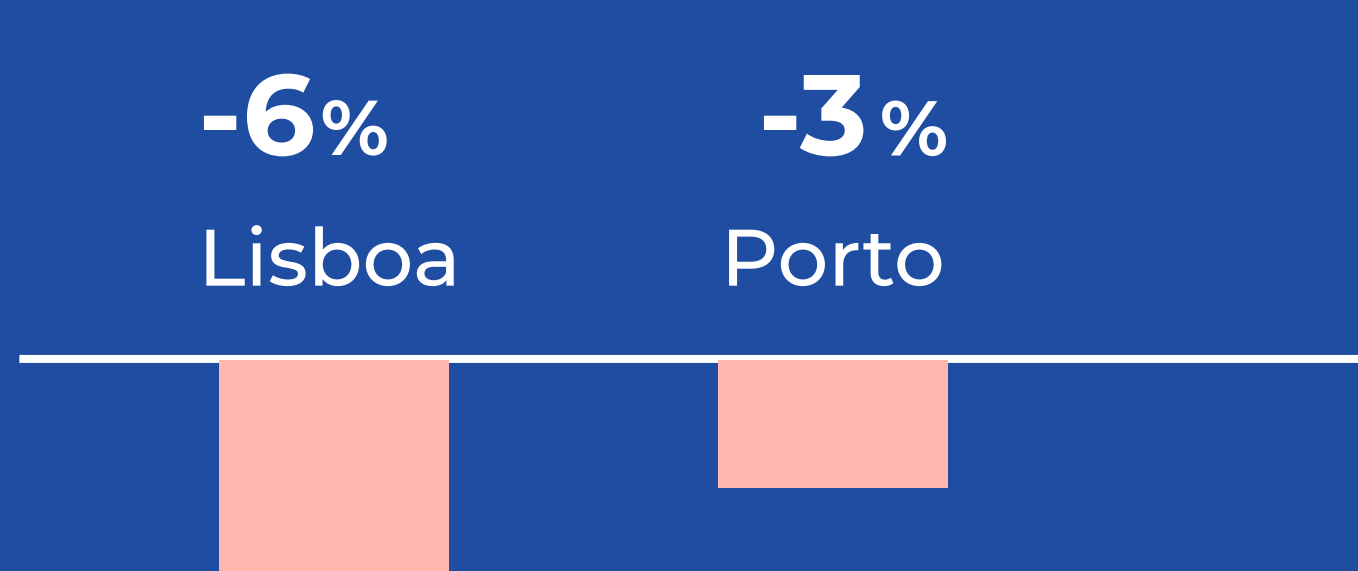
**SUPERMARKET**



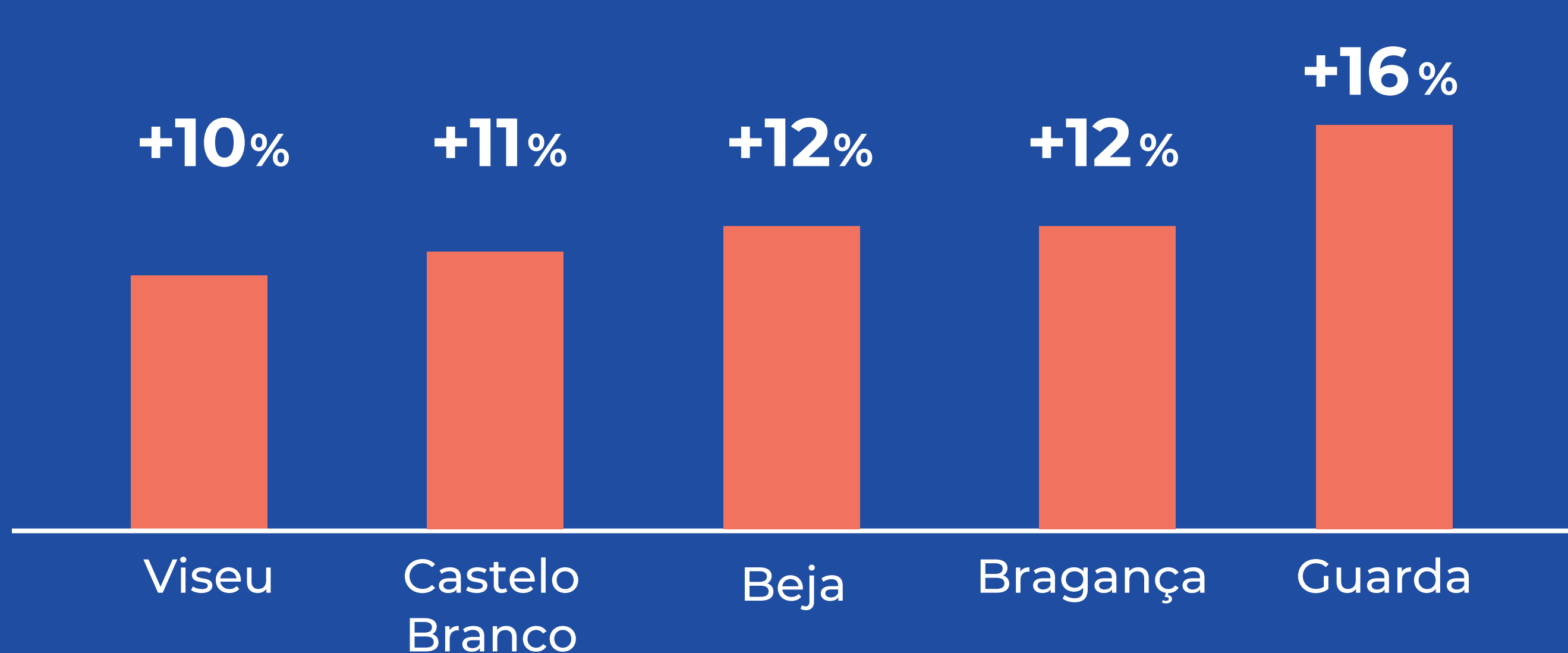
## HOMETOWN RETURNS

Variation in the share of physical purchases and withdrawals in Portugal by consumption district, in the week of Easter 2025 vs. previous week

Districts with negative variation

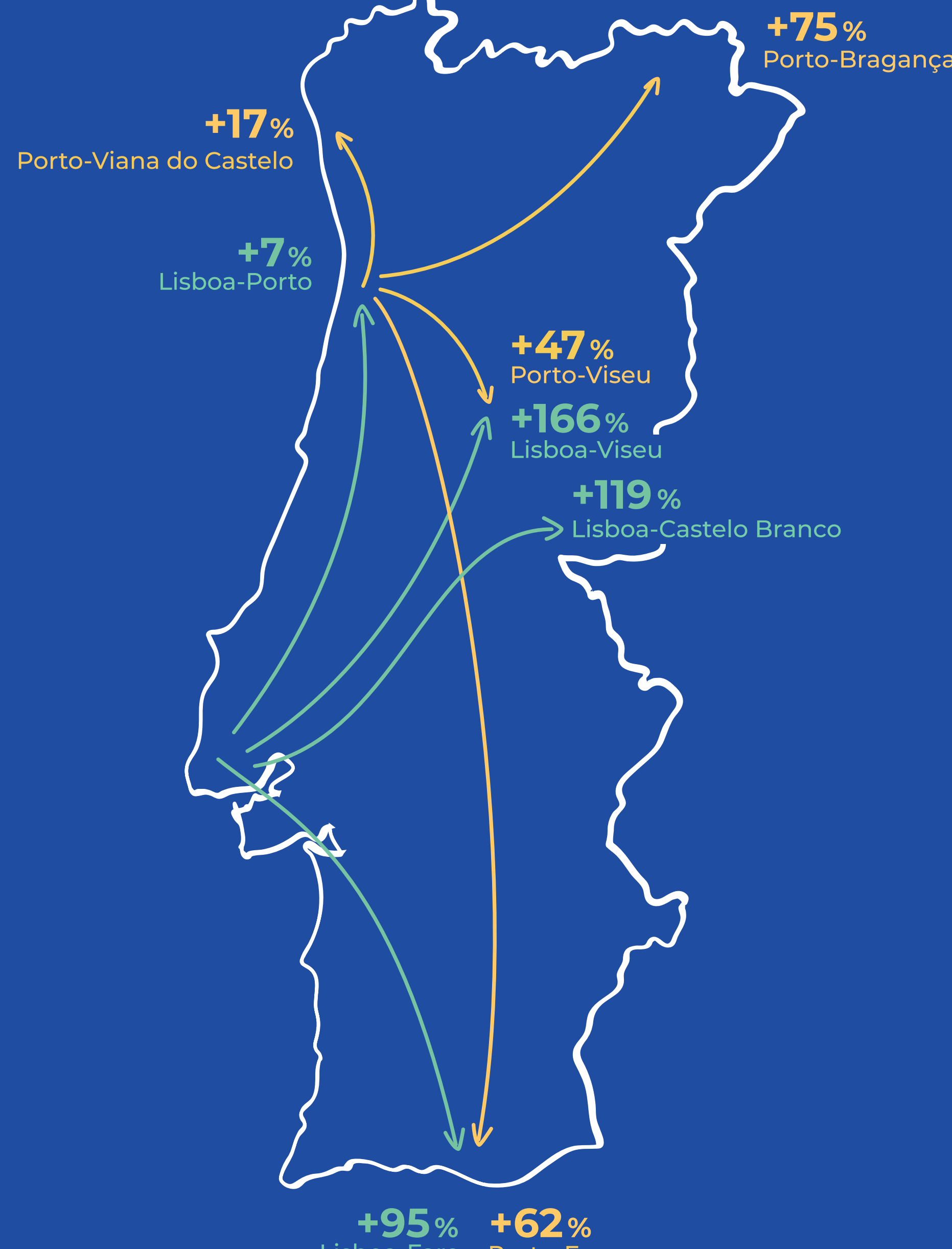


Top districts with positive variation



Main routes taken by Portuguese people who left Lisbon and Porto for destinations more than 50km from their usual place of residence

Variation of physical consumption during the Easter period 2025 vs previous week

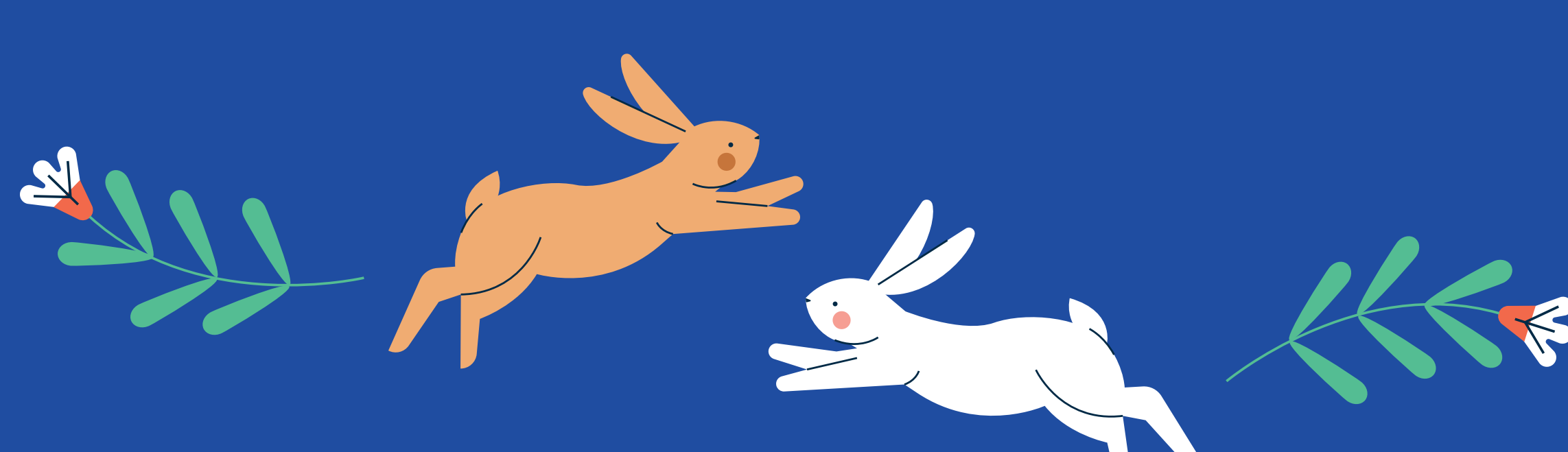


## EASTER SUNDAY

Variation in number and value of physical purchases made by Portuguese in restaurants on Easter Sunday 2025 vs. 2024



**RESTAURANTS**



## PORTUGUESE AROUND THE WORLD

Variation in number and value of physical purchases and withdrawals made by Portuguese people abroad during the Easter period 2025 vs. Easter 2024



**Top destinations around the world**

Weight of transactions in total Portuguese consumption abroad during the Easter period 2025, in number



## FOREIGN TOURISTS

Variation in number and value of physical purchases and withdrawals made by foreigners in Portugal during the Easter period 2025 vs. Easter 2024



**Main origins of tourists in Portugal**

Weight of transactions in total foreign consumption in Portugal during the Easter period of 2025, in number

