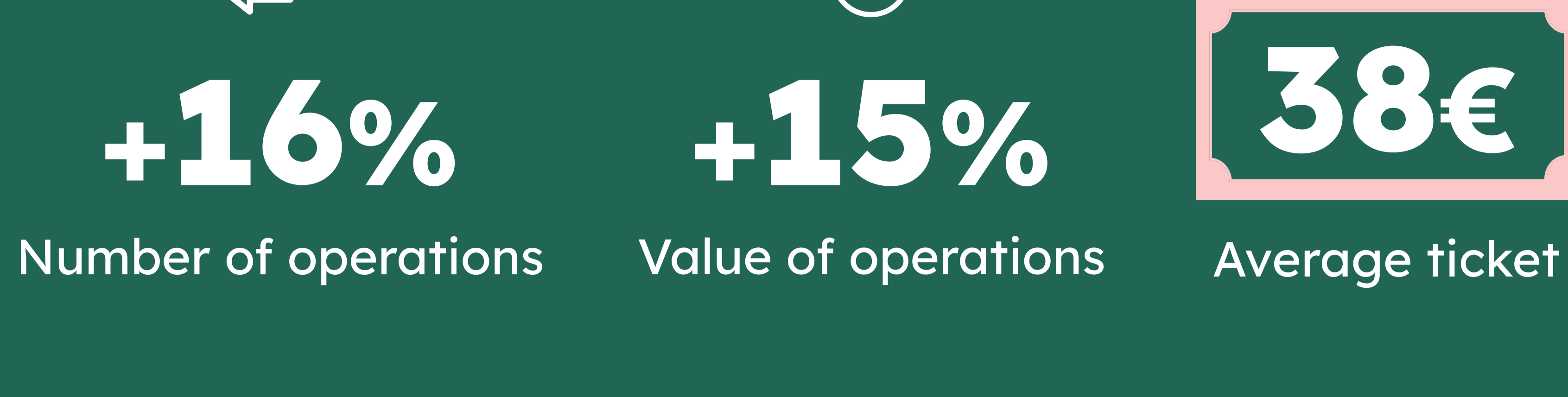


EASTER

Variation in in-store purchases and withdrawals in Portugal during the Easter period 2026 vs. Easter 2025

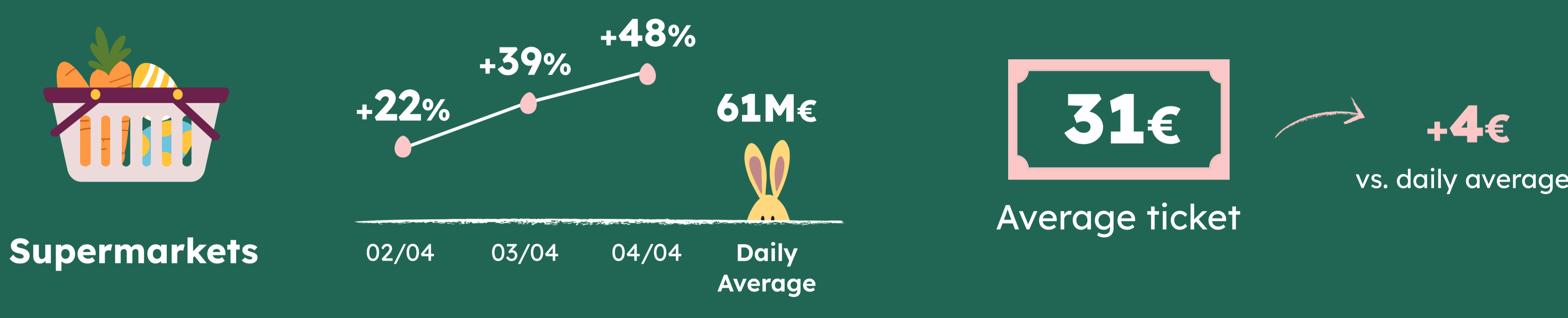


MB WAY



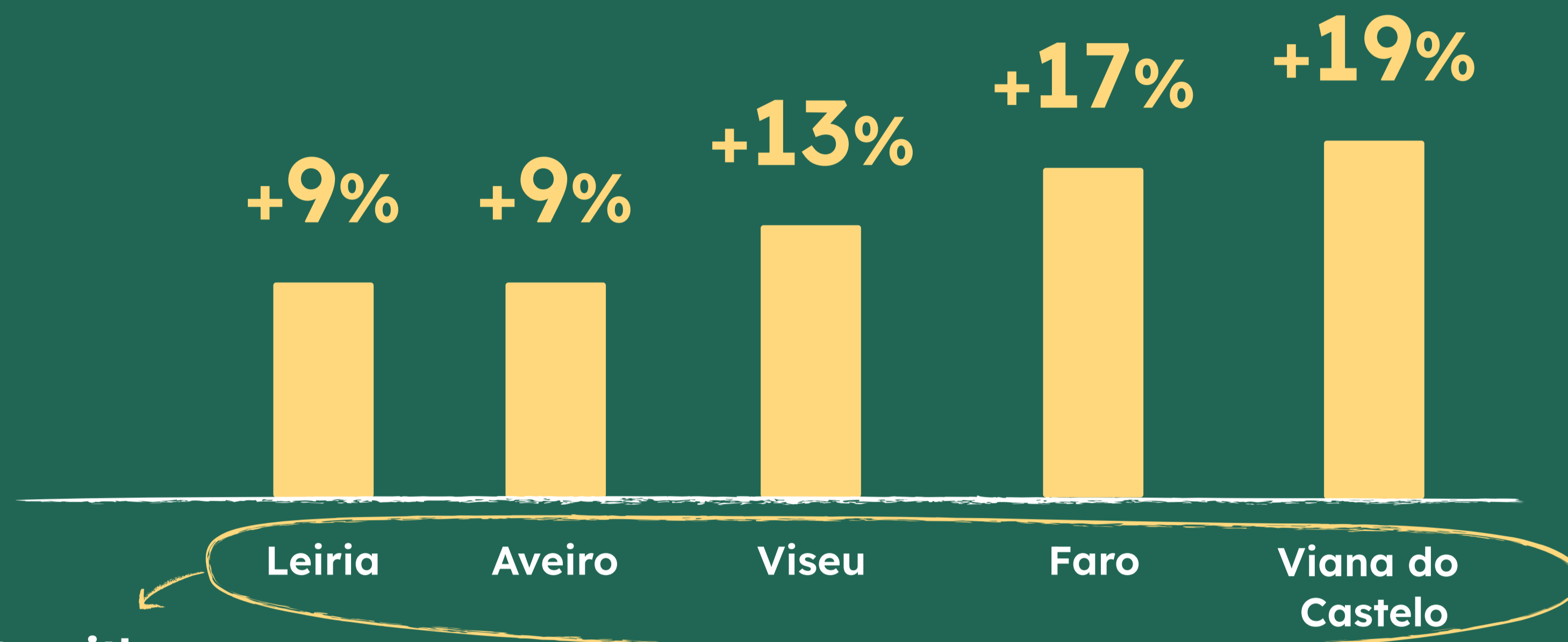
Easter preparations

Variation in the value of purchases and average ticket price made by the Portuguese in supermarkets, compared with the daily average for the same days in the previous week (26th to 29th March)



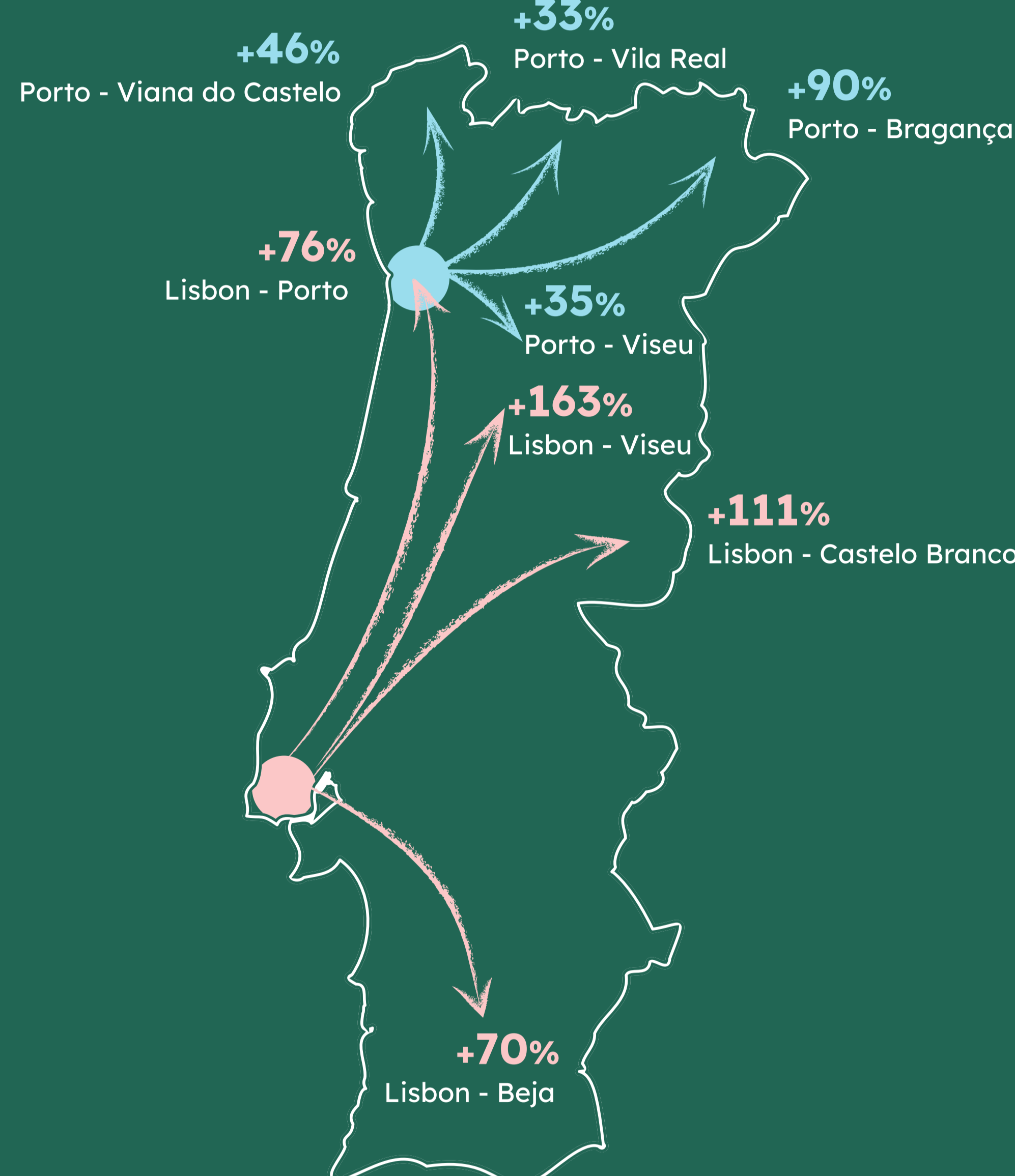
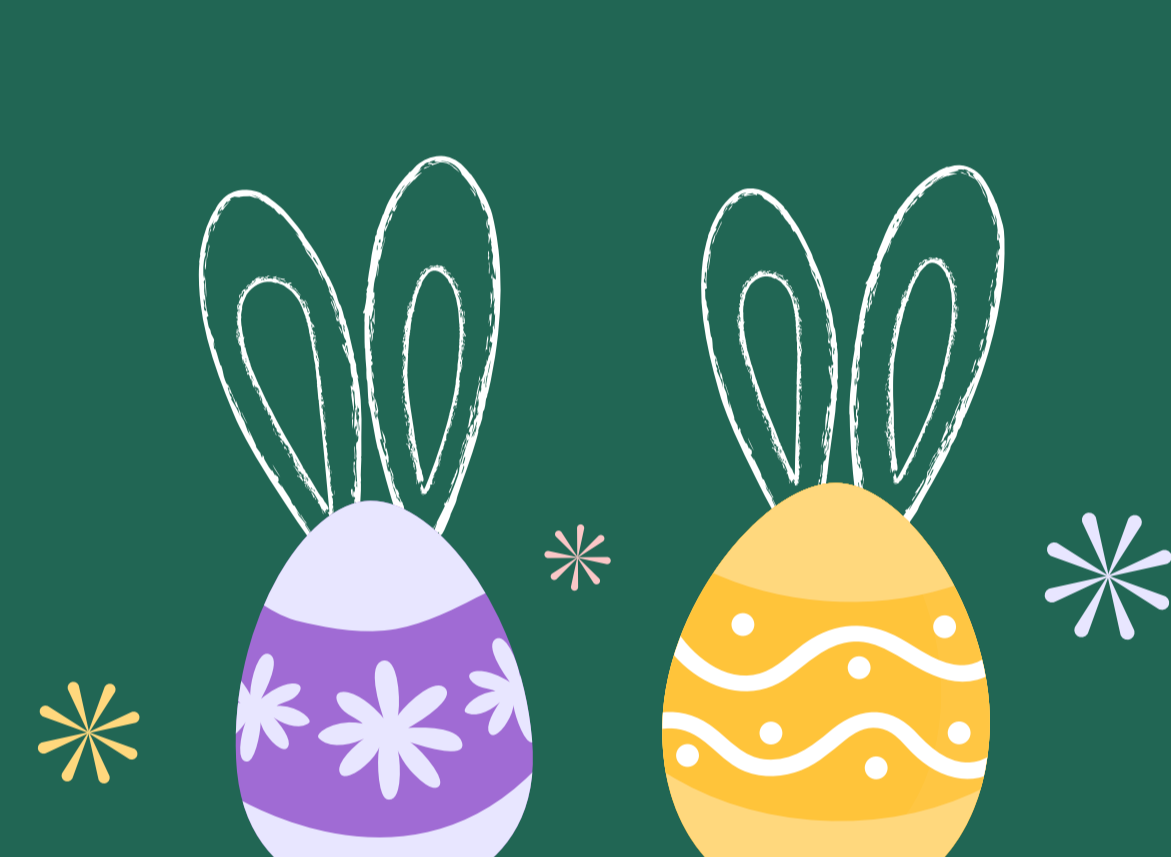
Hometown returns

Variation in in-store consumption between Thursday and Easter Sunday vs. same days of the previous week (Thursday to Sunday)



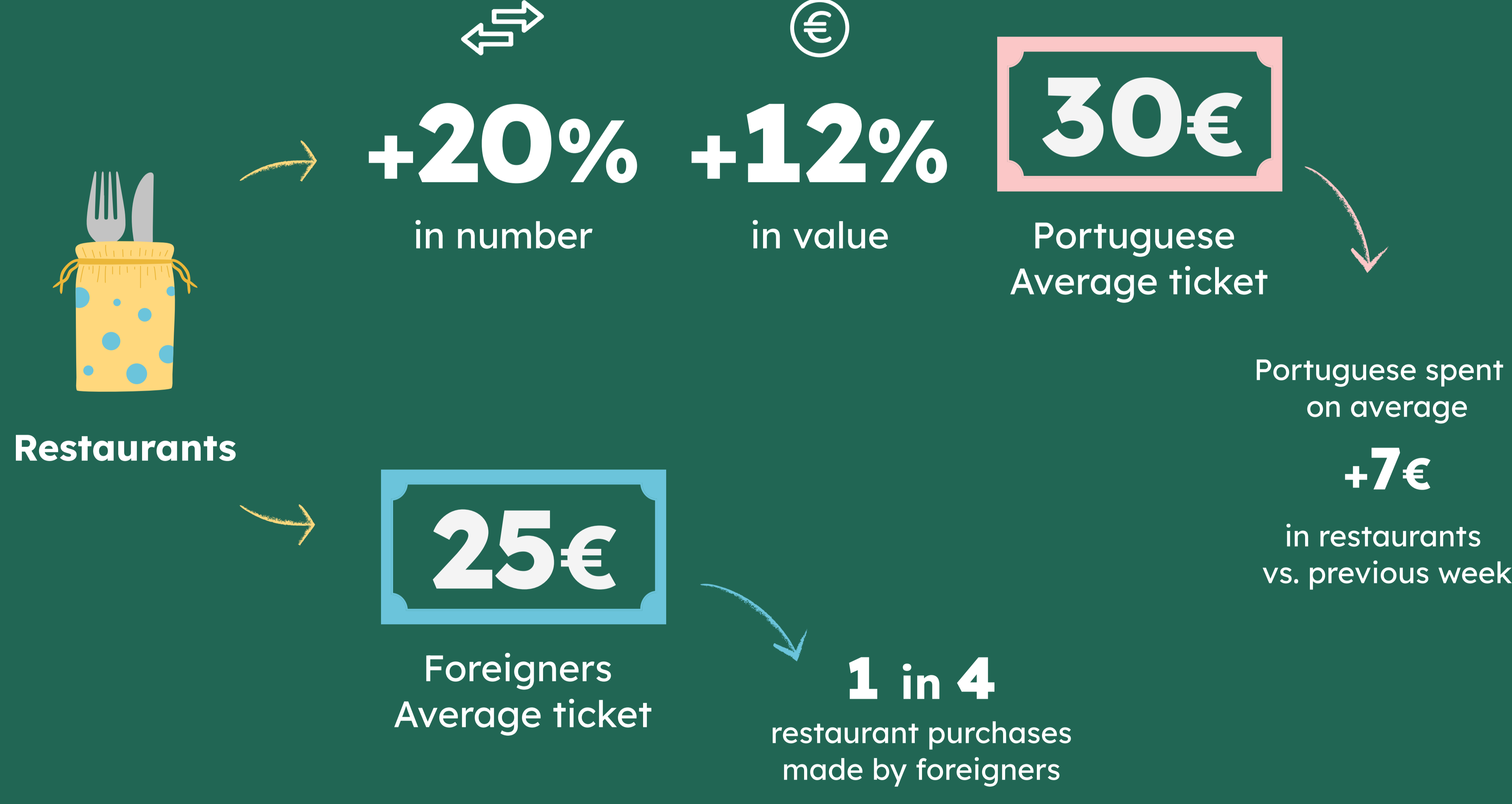
Main routes taken by Portuguese travelers from Lisbon and Porto to destinations more than 50km away

Variation in the number of "in-store" transactions during the Easter period vs. previous week



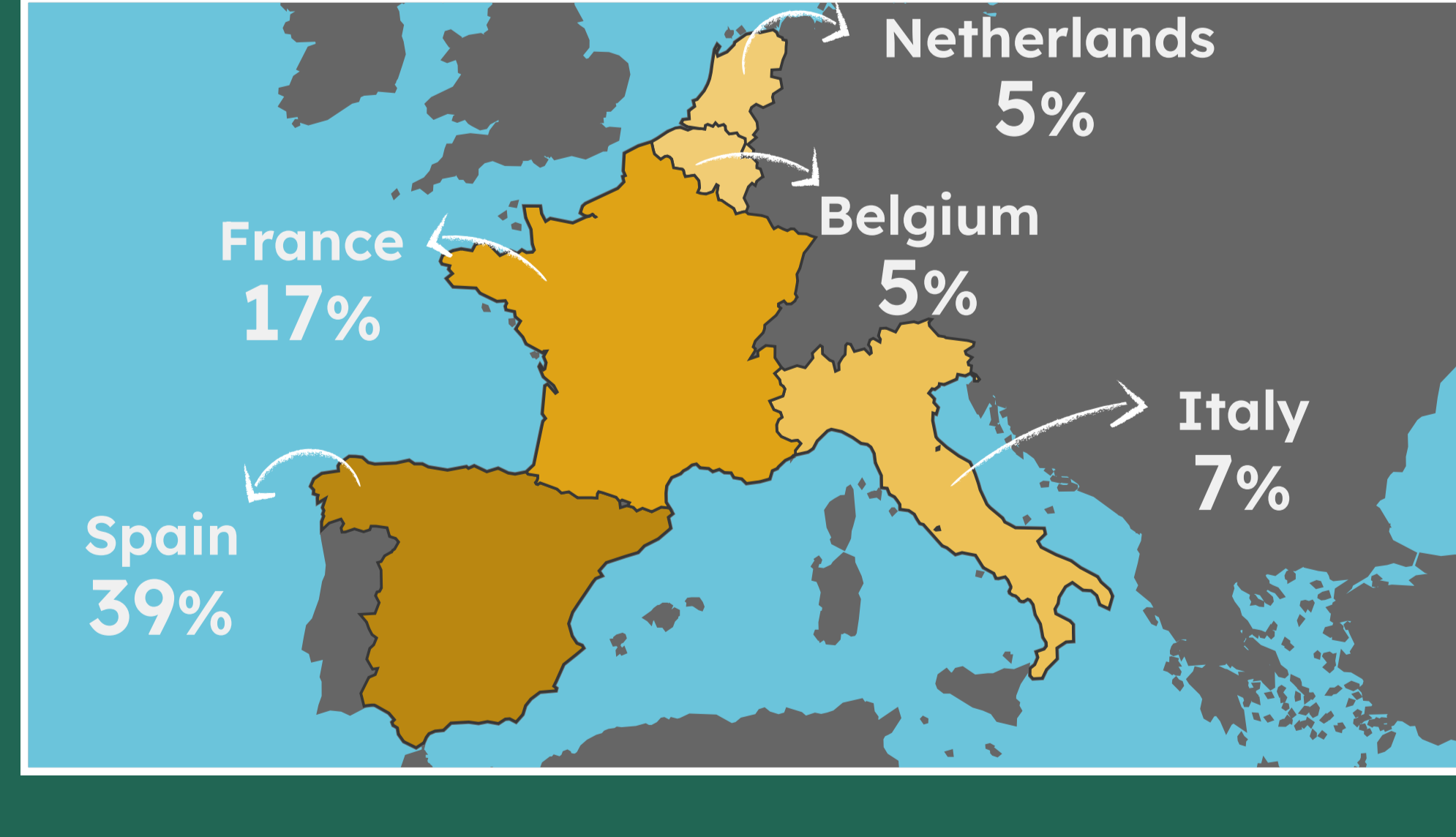
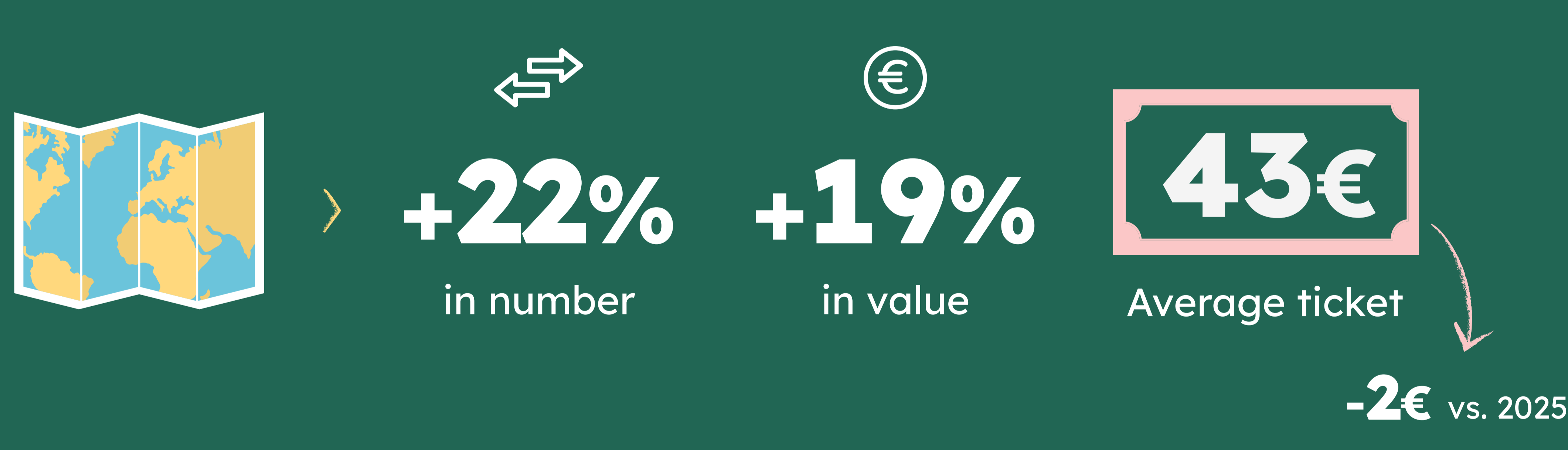
Easter Sunday

Variation in restaurant purchases in Portugal vs. 2025



Portuguese around the world

Variation in the weight of transactions by Portuguese citizens abroad during the Easter period vs previous week



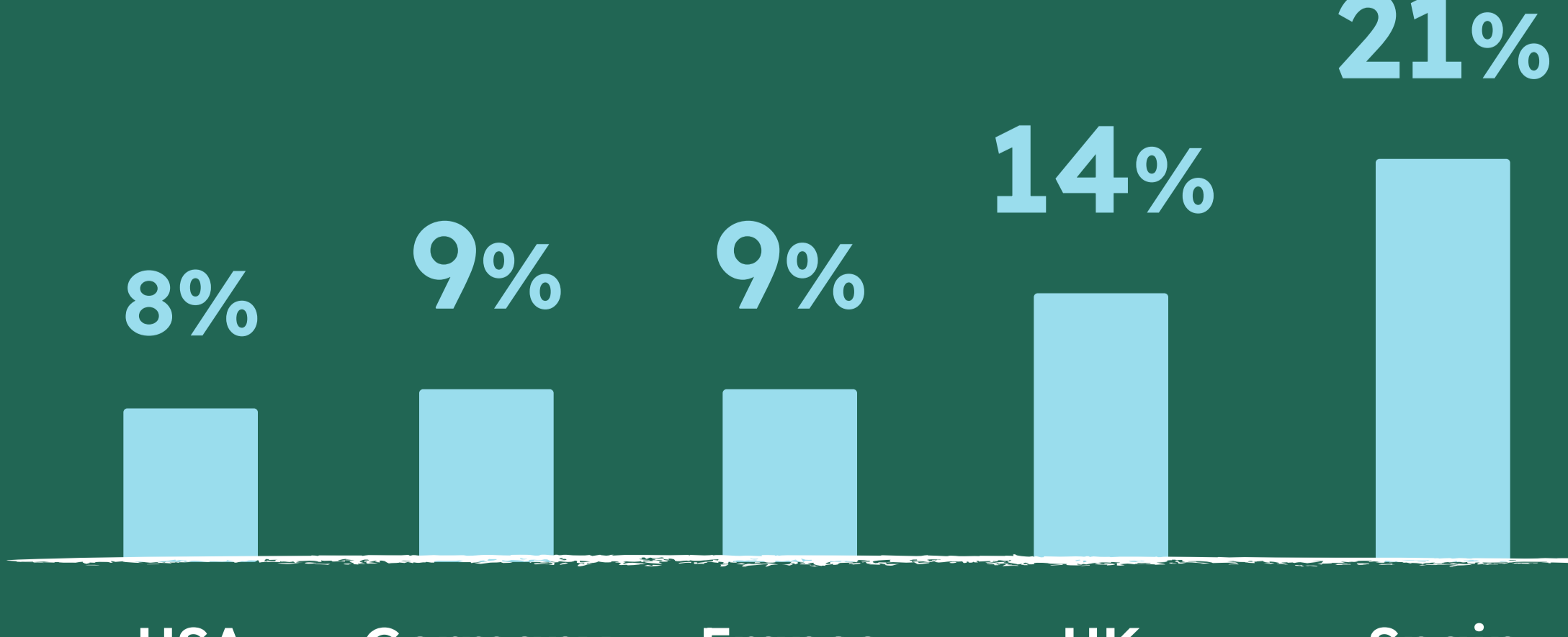
Top destinations around the world
Weight of transactions in the total consumption of Portuguese people abroad during Easter 2026, in number

Foreign Tourists

Variation in the weight of foreigners in Portugal during the Easter period vs. previous week



Main origins of tourists in Portugal
Weight of transactions in total foreign consumption in Portugal during Easter 2026, in number



1.8x more Spanish tourists vs previous week